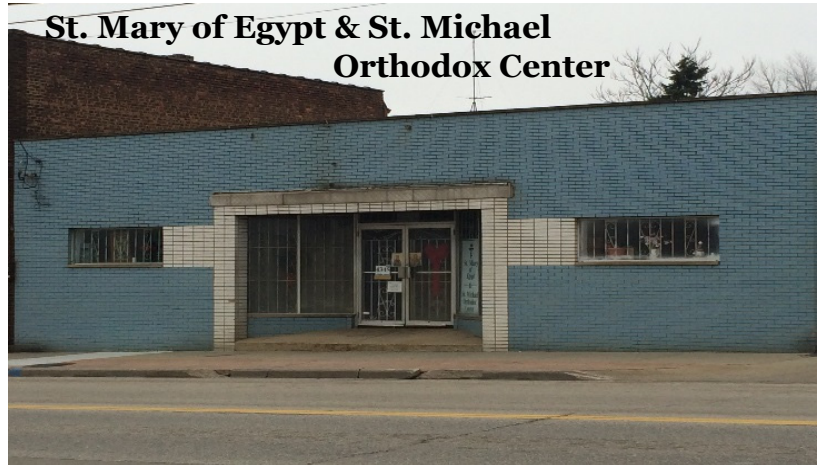


# *St. Mary of Egypt Orthodox Mission & Chapel*



## **MISSION:**

*To respond to the call of  
our Lord Jesus Christ through prayer  
and the offering of love and  
charitable service to the stranger  
and those in need*

## **2014 REPORT**

# History

St. Mary of Egypt was founded in 1992 as a charitable organization to serve the poor with the blessing of His Grace Bishop Maximos and under the direction of Sister Triantaphyllitsa Vasilakis (tonsured to the Small Schema in 2000 as Mother Theonymphie). Since its founding, St. Mary of Egypt has undergone several name changes, while operating under the mission statement established in 1993: **“To provide charitable and humane assistance to the needy.”** Our organization was initially conceived as a women’s sanctuary directing aid to women and children in need. From the beginning, help was also extended to men, elderly and families. The name was officially changed to “St. Mary of Egypt Orthodox Mission” in 1997 until 2000, when the term “Monastery” was added.

We grieve the loss of †Rev. Mother Theonymphie and her Orthodox monastic leadership. The dedicated lay volunteers of St. Mary of Egypt have undertaken the continuation of the charitable outreach that Mother began over twenty years ago. Accordingly, on March 3, 2014, our name officially became **“St. Mary of Egypt Orthodox Mission and Chapel.”**



Rev. Mother Theonymphie  
Foundress & Abbess of  
St. Mary of Egypt

† September 1, 2013

## 2014 in Review

2014 was a year of transition and accomplishment. In January, the newly-restructured St. Mary of Egypt Board met to review and revise the bylaws to support our change from a monastery-based mission to a lay mission. This effort was completed in February and on March 3, the new name, “**St. Mary of Egypt Orthodox Mission and Chapel,**” was registered with the Ohio Secretary of State.

In the early years, food was distributed from the mission home, then later from donated warehouse space until the summer of 2013. January marked the opening of the **St. Mary of Egypt and St. Michael Orthodox Distribution Center.** Our new building was blessed by St. Mary of Egypt’s spiritual advisor, Fr. Dean Dimon, on January 11. The first distribution at this location took place on January 18.

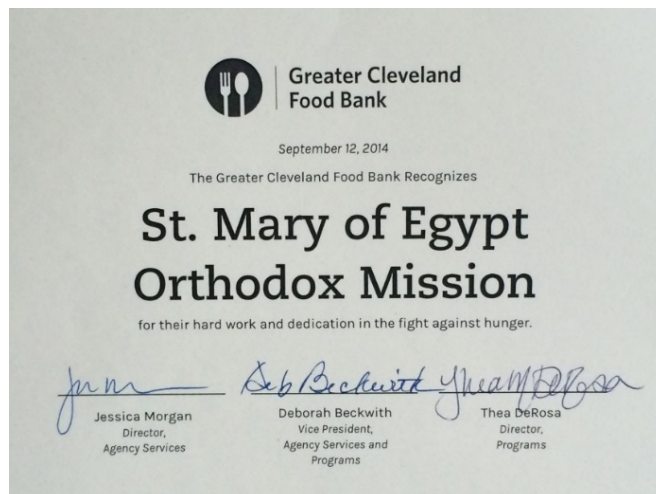
In April, after reviewing all financial documents and bylaws, His Eminence Metropolitan SAVAS of the Metropolis of Pittsburgh gave his blessing to and offered annual oversight of the charitable work of the mission. His Eminence also blessed the St. Mary of Egypt Chapel as a canonical spiritual dependency of the Annunciation Church in Cleveland.

In October, the home and property that had been rented since the inception of St. Mary of Egypt was sold. The Chapel has been relocated for the present to the Annunciation Church in Tremont (2187 W. 14<sup>th</sup> St.) in an expanded side foyer area with a separate entrance on Fairfield Avenue. **Divine Liturgy** continues to be held monthly in the St. Mary of Egypt Chapel.



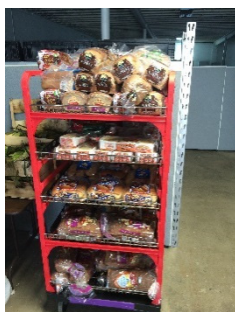
# Outreach Program

St. Mary of Egypt has been a member of the **Greater Cleveland Food Bank (GCFB)** since 1997. In the past seventeen years, thanks to loyal donors and volunteers, we have distributed over **770,000 lbs.** of food.



*GCFB Certificate  
of Commendation  
(September 2014)*

St. Mary of Egypt's new distribution center, co-dedicated to the Archangel Michael, is located at 4345 State Road in Cleveland. Volunteers of all ages are welcome to help assemble food bags on the second Saturday and distribute to the needy on the third Saturday of every month (unless otherwise announced).



Food is regularly purchased from the GCFB for our food ministry. Every month, a variety of canned goods and other “shelf stable” food items are purchased from the GCFB. In addition, fresh produce, frozen meats, bread/pastries and household items are provided as available. Food can be provided on an emergency basis for families in crisis.

**In 2014, St. Mary of Egypt served 1,063 families.**

## Outreach Program:

Last year, 37,778 lbs. of food were provided to local needy families, averaging 15.3 lbs. of food per person served. St. Mary of Egypt's outreach continues to grow monthly. 66 families were served at our new location in January; 105 families were served in November.

- At Christmas, we distributed a selection of **winter coats** for men, women and children, and small gifts were also given for each child.
  - Our phone lines are open **24 hours a day** for emergency food requests and to provide referrals to other agencies for assistance.
  - As available, the Mission also distributes **clothing, baby needs, housewares** and other items.
- 

## Special Thanks to Donors...

- **Saturn Press** ([www.saturnpresspr.com](http://www.saturnpresspr.com))  
Tony & Cindy Balamenti  
*Printing and mailing services for our quarterly newsletter*
- **Superior Construction**  
John G. Boukis  
*Construction, repair and approval process for food building*
- **Professional Management, Inc.**  
Eugene Welsh and Kathy Busta  
*Bookkeeping and accounting services*
- **Website Solutions USA** ([www.websitesolutions1.com](http://www.websitesolutions1.com))  
Mark Sullivan and Leslie Rozman  
*Hosting our website*

---

St. Mary of Egypt is a member of:



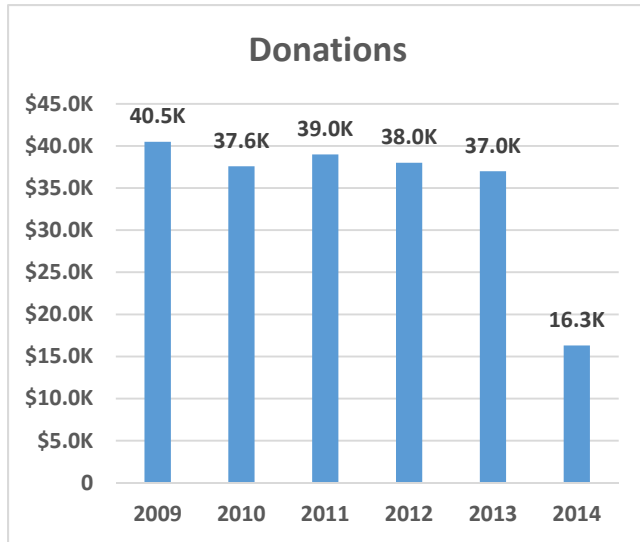
Designated Donor #4697



Secure Online Donation

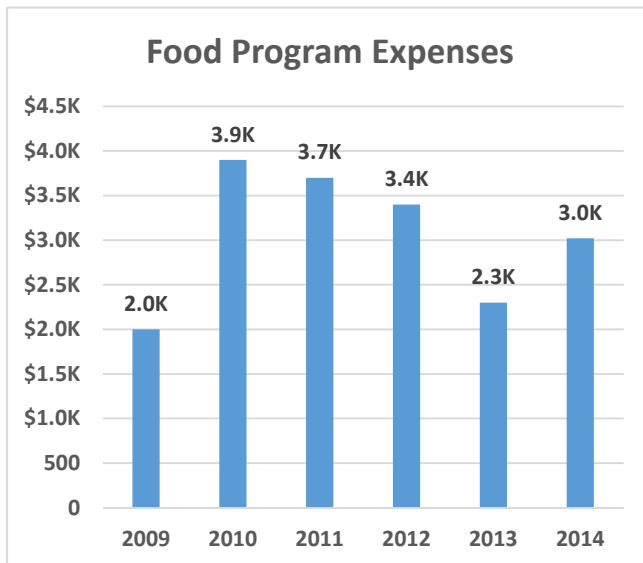


# Treasurer's Report

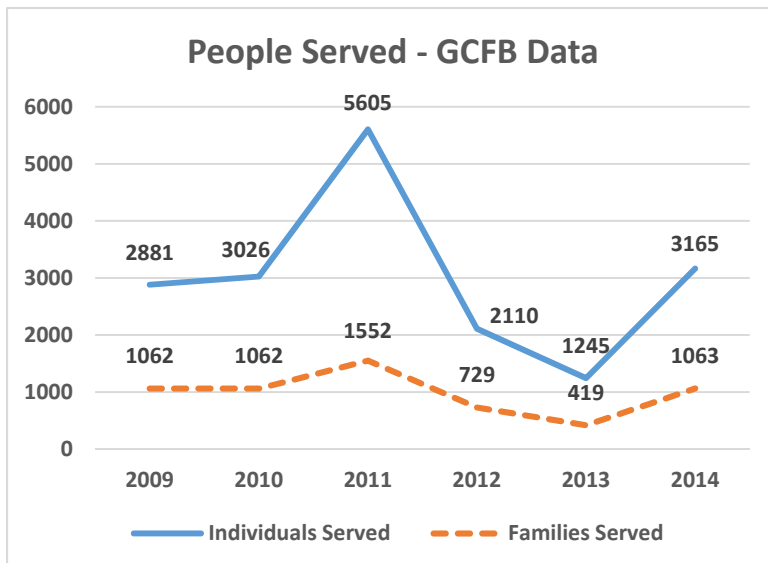


In 2014, St. Mary of Egypt experienced a 56% decline in donations from the prior year. See the chart that shows donation levels for the last six years.

While donations have declined, our food program expenses have increased 30% from prior year levels. The purchase of the Food Building has increased our expenses for ongoing maintenance, insurance, and other costs. This is partly balanced as we no longer have expenses for the Mission home.



We are very pleased to report a return to a higher level of individuals and families served by our food program after the drop in 2013. See the chart below for individuals and families served over the past several years.



Now that the Mission home has been sold, and these activities and expenses are behind us, St. Mary of Egypt can focus on its food program, hopefully increasing the number of individuals and families served going forward.

# Leadership

## **St. Mary of Egypt Executive Board**

Tara Reidy, M.A., President  
Chris Bodle, CPA, Vice President and Treasurer  
Presvytera Daisy Dimon, Secretary  
Ken Boukis, Esq., Trustee and Legal Counsel  
Mary Pagonakis, Trustee  
Ann Papadelis, Trustee

## **St. Mary of Egypt Advisory Board**

Bill Bewley	Chuck Karikas
Nicholas Bodle	Kathy Markos
Vaso Boukis	Jane Murray
Bob Cummings	Virginia Salamalekis
Liberty Darakos	Joe Saliba
Emmanuel Ermidis	Irene Scordos
Cheryl Gross	John Scordos
Mary Vasilakis, Honorary Member	

Special thanks to Committee members and consultants for their major support and contribution during 2014: John Gary Boukis, Kathy Busta, Victoria Keegan, Esq., Charles Papadelis.

## ***Spiritual Oversight and Direction***

*His Eminence Metropolitan Savas,  
Hierarch of the Metropolis of Pittsburgh  
Rev. Fr. Dean Dimon, Spiritual Advisor*