

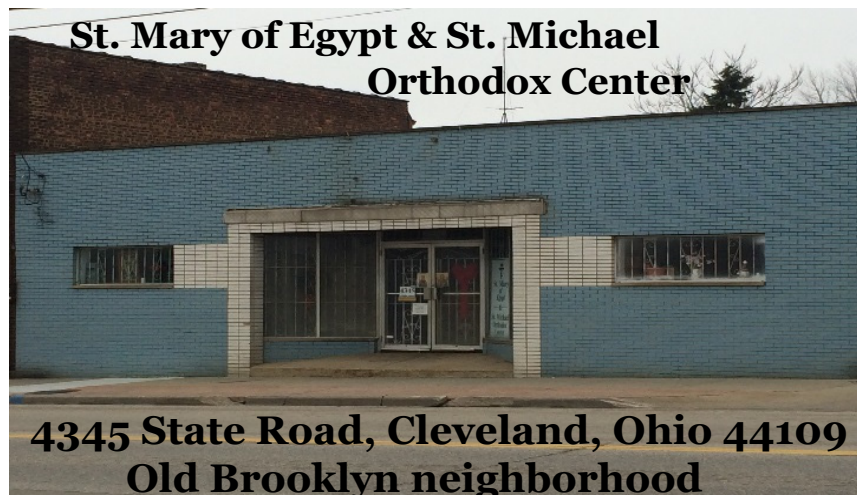
St. Mary of Egypt Orthodox Mission & Chapel



Mission Statement:

*To respond to the call of our Lord Jesus Christ
through prayer and the offering of love and charitable service
to the stranger and those in need*

Mission Report - Revised June 2020





History

**Rev. Mother Theonymphie
Foundress of St. Mary of Egypt**

† September 1, 2013

St. Mary of Egypt was founded in 1992 as a charitable organization to serve the poor with the blessing of His Eminence Metropolitan Maximos of Pittsburgh and under the direction of Sister Triantaphyllitsa Vasilakis (tonsured to the Small Schema in 2000 as Mother Theonymphie). Since its founding, St. Mary of Egypt has undergone several name changes, while operating under the vision first established in 1993: **“To provide charitable and humane assistance to the needy.”** Our organization was initially conceived as a charity directing aid to women and children in need; however, from the beginning, help was also extended to men, elderly and families. In 2000, the St. Mary of Egypt Orthodox Mission acquired the new title **“Mission & Monastery.”**

* * *

2014 was a year of transition for the Mission. With the passing of our Abbess and director in 2013, the Board was restructured and bylaws rewritten to support our change from a monastery-based mission to a lay Orthodox organization.

On March 3, 2014, **“St. Mary of Egypt Orthodox Mission and Chapel”** became our official name, as registered with the Ohio Secretary of State.

In the early years, food was given out from the mission home, then later from donated warehouse space through the summer of 2013. Through the generosity of a caring donor, the **St. Mary of Egypt and St. Michael Orthodox Center** opened with distribution on January 18, 2014.

In April 2014, His Eminence Metropolitan Savas of Pittsburgh gave his blessing to and offered annual review of the charitable work of the mission. His Eminence appointed the St. Mary of Egypt Chapel to be a canonical spiritual dependency of the Annunciation Church in Cleveland.



In October 2014, the St. Mary of Egypt Chapel moved from its original location to the Annunciation Church (2187 W. 14th Street). The church temporarily has provided a large foyer area with a separate side entrance for our Chapel.

Divine Liturgy is held monthly in the St. Mary of Egypt Chapel.

The St. Mary of Egypt Outreach Program

*“According to [a 2019 report by] the USDA, more than 37 million people in the United States struggle with hunger. Households with children are more likely to experience food insecurity. Currently, more than 11 million children live in food-insecure households. Many households that experience food insecurity do not qualify for federal nutrition programs and **need to rely on their local food banks and other hunger relief organizations for support.**”*
(from FeedingAmerica.org)

St. Mary of Egypt has been a member of the **Greater Cleveland Food Bank (GCFB)** since 1997. Food is regularly purchased from the GCFB for our food ministry, supplemented by significant contributions from other local donors. Every month, a variety of canned goods and other shelf-stable food items are distributed, along with fresh produce, frozen meats, and bread/pastries. Clothing, household items, and baby needs are provided as available. Emergency distribution can be arranged for local families in crisis. Over the past twenty years, thanks to loyal donors and volunteers, we have distributed over **976,000 lbs.** of food.

The Greater Cleveland Food Bank Report

From October 2018 – September 2019, **over 61,000 lbs. of food** were purchased from the GCFB, including over 14,000 lbs. of fresh produce. Many additional pounds were contributed by other donors.

As shown in the chart below, our service to the community increased by 13% in 2019. See graph below for a five-year history.

Calendar Year Statistics	<u>Jan – Dec 2018</u>	<u>Jan – Dec 2019</u>
Individuals Served	3,445	3,898
Families Served	1,124	1,180

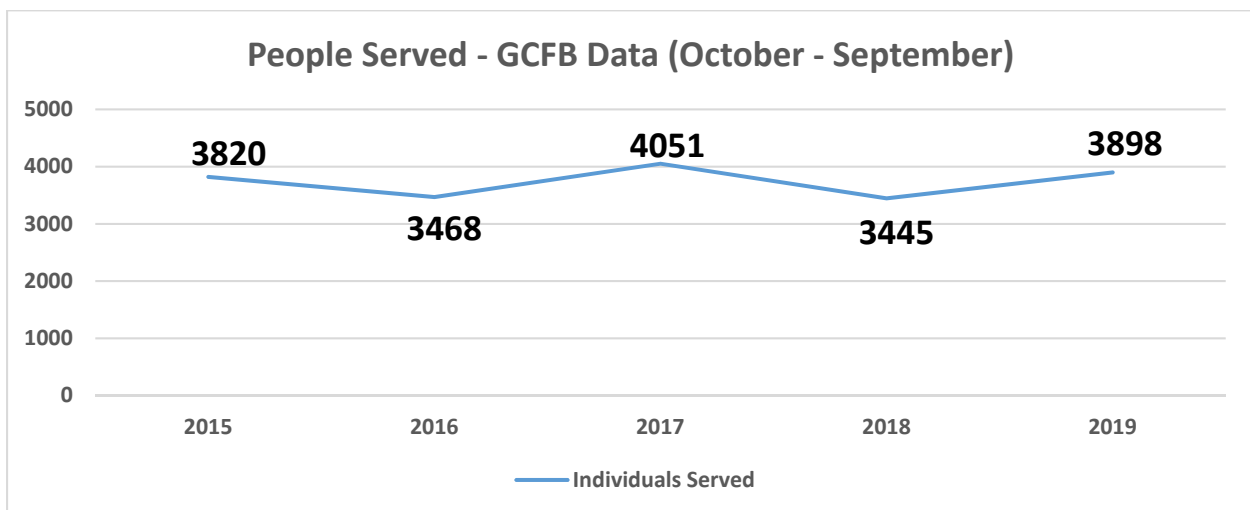
Last year, 28% of our clients were children, and 18% were seniors.

The Food Bank plays a significant role in supervising our outreach program. They monitor the quality of food they provide, passing regular governmental inspections of their central facility. In turn, they set standards for their partner agencies. They hold annual site visits to inspect our facility and offer suggestions to guide our improvement.

Our phone lines are open 24 hours a day for emergency food requests and to provide referrals to other agencies for assistance.

(440) 473-3885

Five-Year Client Report



In the Mission's 28th year of charitable service to those in need, we are grateful to all those who make our work possible.

To the donors, benefactors, volunteers, and board members of St. Mary of Egypt, **Thank You!**

Thanks to Local Donors and Businesses for Their Loyal Support:

- **Food:**

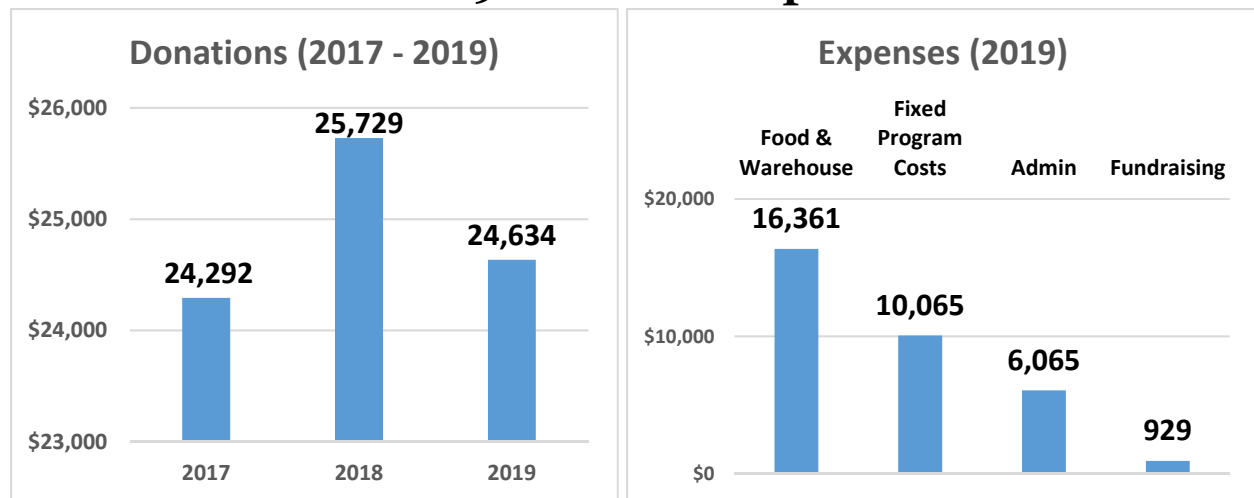
- [Orlando Bakery](#) is our major provider of bread each month.
- [Honey Baked Ham](#) has faithfully contributed ham bones (with plenty of meat) and bagged pieces for many years.

- **Communications:**

- [Saturn Press](#) prints and mails our quarterly newsletter.
- [Website Solutions USA](#) hosts our website.

* * *

2019 Financial Report



Fixed program costs include vehicle expenses, our 24-hour emergency hotline service, and taxes & fees.

As reported by Charity Navigator, a typical charity “should spend no more than 25% of their total expenses on administrative...and fundraising costs combined” (CharityNavigator.org). St. Mary of Egypt has met this standard, with **80%** of donations going towards our programs and related operations. Direct donations provided for 74% of our expenses in 2019. We rely on your generous financial support to sustain our charitable service to those in need.

St. Mary of Egypt Executive Board

Officers:

Tara Reidy, President

Ann Papadelis, Vice President

Presvytera Daisy Dimon, Secretary

Nicholas Bodle, Treasurer

Trustees:

Ken Boukis, Esq., Legal Counsel

Mary Pagonakis

St. Mary of Egypt Advisory Board

Bill Bewley

Liberty Darakos

Cheryl Krawetz

Maria Lovejoy

Tessie Lekas

Jane Murray

Irene & John Scordos

Spiritual Oversight and Direction

His Eminence Savas, Metropolitan of Pittsburgh

Rev. Fr. Dean Dimon, Priest of Annunciation Church in Cleveland

Thanks to Consultants:

- **John Gary Boukis** of **Superior Construction** for ongoing warehouse repair and upgrade
- **Charles Papadelis** for managing our “Thank You” letters and donation receipts
- **Rea & Associates** for their support with accounting and tax services

St. Mary of Egypt is a member of:



Designated Donor #4697



Secure Online Donation

