

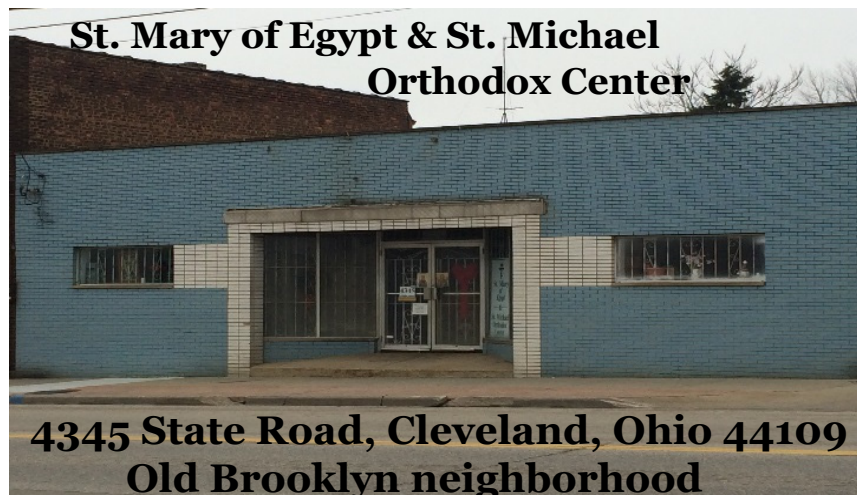
St. Mary of Egypt Orthodox Mission & Chapel



Mission Statement:

*To respond to the call of our Lord Jesus Christ
through prayer and the offering of love and charitable service
to the stranger and those in need*

Mission Report - Revised June 2023





History

Rev. Mother Theonymphie
Foundress of St. Mary of Egypt

† September 1, 2013

St. Mary of Egypt was founded in 1992 as a charitable organization to serve the poor with the blessing of His Eminence Metropolitan Maximos of Pittsburgh and under the direction of Sister Triantaphyllitsa Vasilakis (tonsured to the Small Schema in 2000 as Mother Theonymphie). Since its founding, St. Mary of Egypt has undergone several name changes, while operating under the vision first established in 1993: **“To provide charitable and humane assistance to the needy.”** Our organization was initially conceived as a charity directing aid to women and children in need; however, from the beginning, help was also extended to men, elderly and families. In 2000, the St. Mary of Egypt Orthodox Mission acquired the new title **“Mission & Monastery.”**

* * *

2014 was a year of transition for the Mission. With the passing of our Abbess and director in 2013, the Board was restructured and bylaws rewritten to support our change from a monastery-based mission to a lay Orthodox organization.

On March 3, 2014, **“St. Mary of Egypt Orthodox Mission and Chapel”** became our official name, as registered with the Ohio Secretary of State.

In the early years, food was given out from the mission home, then later from donated warehouse space through the summer of 2013. Through the generosity of a caring donor, the **St. Mary of Egypt and St. Michael Orthodox Center** opened with distribution on January 18, 2014.

The St. Mary of Egypt Chapel Program

In April 2014, His Eminence Metropolitan Savas of Pittsburgh gave his blessing to and offered annual review of the charitable work of the Mission. His Eminence appointed the St. Mary of Egypt Chapel to be a canonical spiritual dependency of the Annunciation Church in Cleveland.



In October 2014, the St. Mary of Egypt Chapel moved from its original location to the Annunciation Church (2187 W. 14th Street). The Chapel has been reconstructed and is now set up in a dedicated room of the church's school building. Our original icon screen has been brought out of storage.

Services in the Chapel have been sponsored by St. Mary of Egypt and by Annunciation Church.

The St. Mary of Egypt Outreach Program

St. Mary of Egypt has been a member of the **Greater Cleveland Food Bank (GCFB)** since 1997. A variety of canned goods and other shelf-stable food items, fresh produce, frozen meats, and breads are regularly purchased from the Food Bank, supplemented by other local donors, and distributed every month. Interim emergency distribution is arranged as needed. Over the past twenty-five years, thanks to loyal donors and volunteers, we have distributed over **1,000,000 lbs.** of food.

The number of food-insecure households has greatly increased during the pandemic. The most recent data shows that more than 30% of Ohioans were eligible for assistance through the GCFB before the pandemic, and that figure has only increased. Currently, 1 in 5 adults and 1 in 4 children are food insecure, meaning they cannot depend on enough or adequate quality food. Since the beginning of the pandemic in early 2020:

- We have increased our **emergency availability**
- We have developed an effective **drive-thru method** of distribution
- We have had a marked increase in **young volunteers**

The Greater Cleveland Food Bank Report

Between 2021 and 2022, **over 115,000 lbs. of food** were purchased from the GCFB, including over 18,000 lbs. of fresh produce. Many additional pounds were contributed by other donors. This resulted in **over 96,000 meals served** in the past two years.

See the chart below for our service to the community over the past two years (note a 23% increase). See graph below for a five-year history.

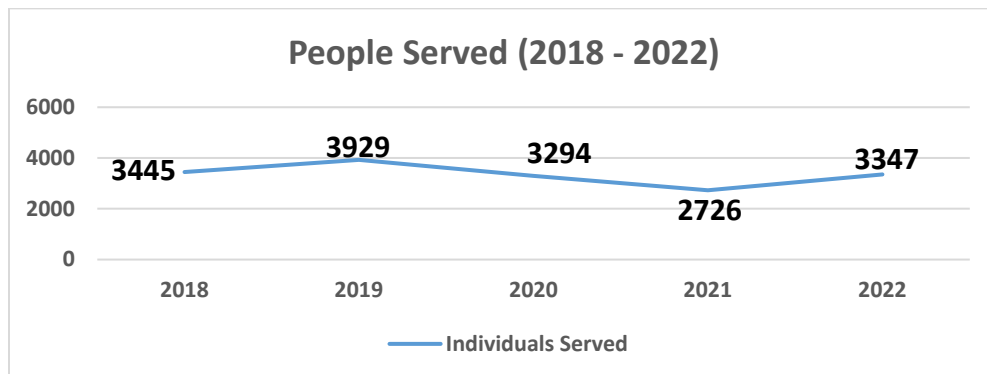
Calendar Year Statistics	<u>Jan – Dec 2021</u>	<u>Jan – Dec 2022</u>
Individuals Served	2,726	3,347
Families Served	868	1,051

The Food Bank plays a significant role in supervising our outreach program. They monitor the quality of food they provide, passing regular governmental inspections of their central facility. In turn, they set standards for their partner agencies. They hold annual site visits to inspect our facility and offer suggestions to guide our improvement.

Our phone lines are open 24 hours a day for emergency food requests and to provide referrals to other agencies for assistance.

(440) 473-3885

Five-Year Client Report



As emergency SNAP benefits that were distributed during the pandemic have expired, the need for food has increased in our area. As of February 2023, food inflation has reached the highest rate (12%) since 1979.

In the Mission's **31st Anniversary** year of charitable service, we are grateful to all those who make our work possible.

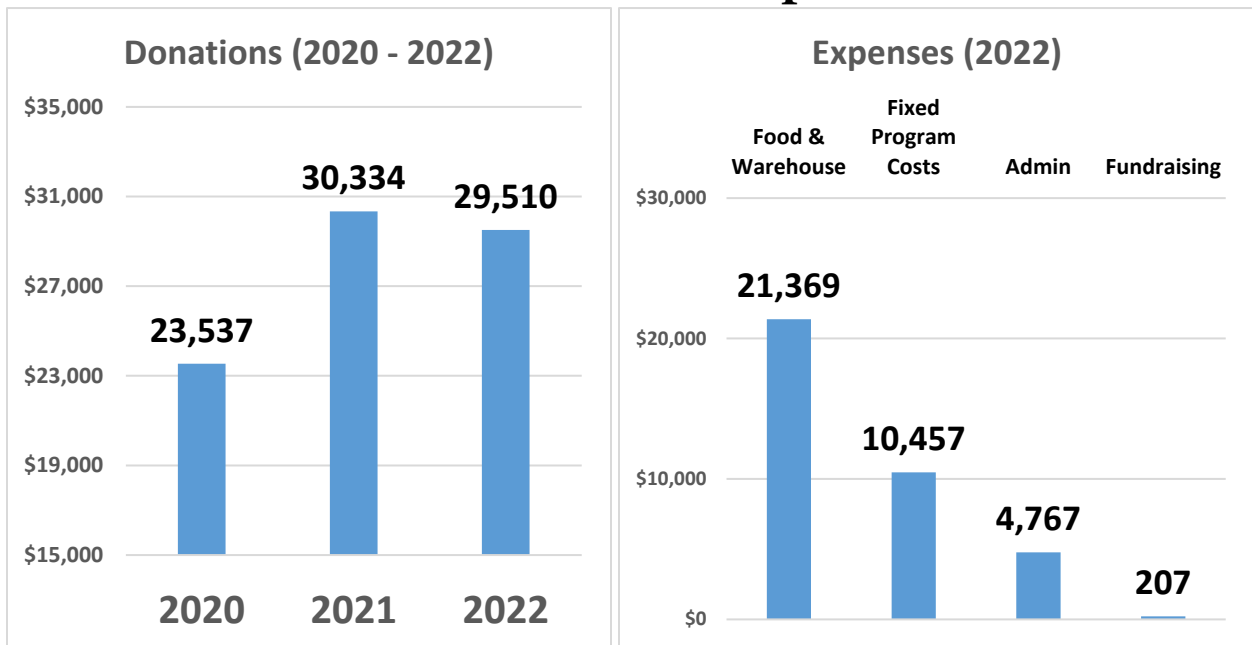
To the donors, benefactors, volunteers, and board members of St. Mary of Egypt, **Thank You!**

Thanks to Local Donors and Businesses for Their Loyal Support:

- [Orlando Bakery](#) has been a major provider of bread each month.
- The [Hunger Network](#) offers financial support and connects us to local sources of produce.
- [Website Solutions USA](#) hosts our website.
- Our deepest gratitude to [Saturn Press](#) who donated our quarterly newsletter for many years until their retirement in 2022.

* * *

2022 Financial Report



Fixed program costs include vehicle expenses, our 24-hour emergency hotline service, and taxes & fees.

As reported by Charity Navigator, a typical charity “should spend no more than 25% of their total expenses on administrative...and fundraising costs combined” (CharityNavigator.org). St. Mary of Egypt has met this standard, with **87%** of donations going towards our programs and related operations. Direct donations provided for 80% of our expenses in 2022. We rely on your generous financial support to sustain our outreach ministry.

St. Mary of Egypt Executive Board

Officers:

Tara Reidy, President

Ann Papadelis, Vice President

Presvytera Daisy Dimon, Secretary

Nicholas Bodle, Treasurer

Trustees:

Ken Boukis, Esq., Legal Counsel

Mary Pagonakis

St. Mary of Egypt Advisory Board

Bill Bewley

Liberty Darakos

Maria Lovejoy

Tessie Lekas

Jane Murray

Irene & John Scordos

Spiritual Oversight and Direction

His Eminence Savas, Metropolitan of Pittsburgh

Rev. Fr. Dean Dimon, Priest of Annunciation Church in Cleveland

Thanks to Consultants:

- **John Gary Boukis** of **Superior Construction** for ongoing warehouse repair and upgrade
- **Charles Papadelis** for managing our donation receipts
- **R.A. Tielke Tax & Accounting** for their support with accounting and payroll services

St. Mary of Egypt is a member of:



Designated Donor #4697



Secure Online Donation

