

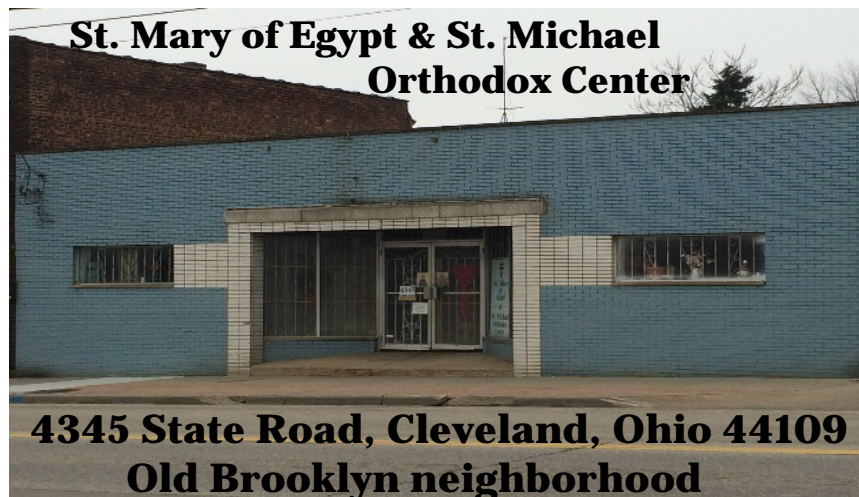
St. Mary of Egypt Orthodox Mission & Chapel



Mission Statement:

*To respond to the call of our Lord Jesus Christ
through prayer and the offering of love and charitable service
to the stranger and those in need*

Mission Report (Revised 2017)





History

**Rev. Mother Theonymphie
Foundress of St. Mary of Egypt**

† September 1, 2013

St. Mary of Egypt was founded in 1992 as a charitable organization to serve the poor with the blessing of His Eminence Metropolitan Maximos of Pittsburgh and under the direction of Sister Triantaphyllitsa Vasilakis (tonsured to the Small Schema in 2000 as Mother Theonymphie). Since its founding, St. Mary of Egypt has undergone several name changes, while operating under the mission statement established in 1993: **“To provide charitable and humane assistance to the needy.”** Our organization was initially conceived as a charity directing aid to women and children in need; however, from the beginning, help was also extended to men, elderly and families. In 2000, the St. Mary of Egypt Orthodox Mission acquired the new title **“Mission & Monastery.”**

2014 was a year of transition and accomplishment. With the passing of our Abbess and director in 2013, the Board was restructured and bylaws rewritten to support our change from a monastery-based mission to a lay mission.

On March 3, 2014, “St. Mary of Egypt Orthodox Mission and Chapel” became our official name, as registered with the Ohio Secretary of State.

In the early years, food was distributed from the mission home, then later from donated warehouse space through the summer of 2013. **The St. Mary of Egypt and St. Michael Orthodox Distribution Center** opened in January 2014. The first distribution at our new building, co-dedicated to the Archangel Michael, took place on January 18.

In April 2014, His Eminence Metropolitan Savas of Pittsburgh gave his blessing to and offered annual review of the charitable work of the mission. His Eminence appointed the St. Mary of Egypt Chapel to be a canonical spiritual dependency of the Annunciation Church in Cleveland.



In October 2014, the St. Mary of Egypt Chapel moved from its original location to the Annunciation Church (2187 W. 14th St.) in a large foyer area with a separate entrance on Fairfield Avenue.

Divine Liturgy is held monthly in the St. Mary of Egypt Chapel.

The St. Mary of Egypt Outreach Program

“Around 46 million Americans now regularly depend on food banks and soup kitchens to keep themselves and their families from going hungry. That figure accounts for one-out-of-seven people in the United States” (Daniel Barker, NaturalNews.com, Dec. 18, 2015).

St. Mary of Egypt has been a member of the **Greater Cleveland Food Bank (GCFB)** since 1997. Food is regularly purchased from the GCFB for our food ministry, supplemented by significant contributions from other local donors. Every month, a variety of canned goods and other shelf-stable food items are distributed, along with fresh produce, frozen meats, and bread/pastries. Clothing, household items, and baby needs are provided as available. Emergency distribution can be arranged for local families in crisis. In the past eighteen years, thanks to loyal donors and volunteers, we have distributed over **800,000 lbs.** of food.

The Greater Cleveland Food Bank Report:

54,674 lbs. of food were purchased from October 2015 through September 2016. **87% of pounds were considered nutritious**, based on the GCFB's "Choose Healthy Options Program." Fresh produce accounted for 14,911 lbs. Many additional pounds were distributed from other donors.

Calendar Year Statistics	<u>Jan – Dec 2015</u>	<u>Jan – Dec 2016</u>
Individuals Served	4,048	3,468
Families Served	1,207	1,138

Seniors represented 17.4% of our clients, while 27.3% were children.

The Food Bank plays a significant role in supervising our outreach program. They set standards for the quality of food they provide, passing regular governmental inspections of their central facility. In turn, they set standards for their partner agencies. They hold annual site visits to inspect our facility and offer information to guide our improvement.

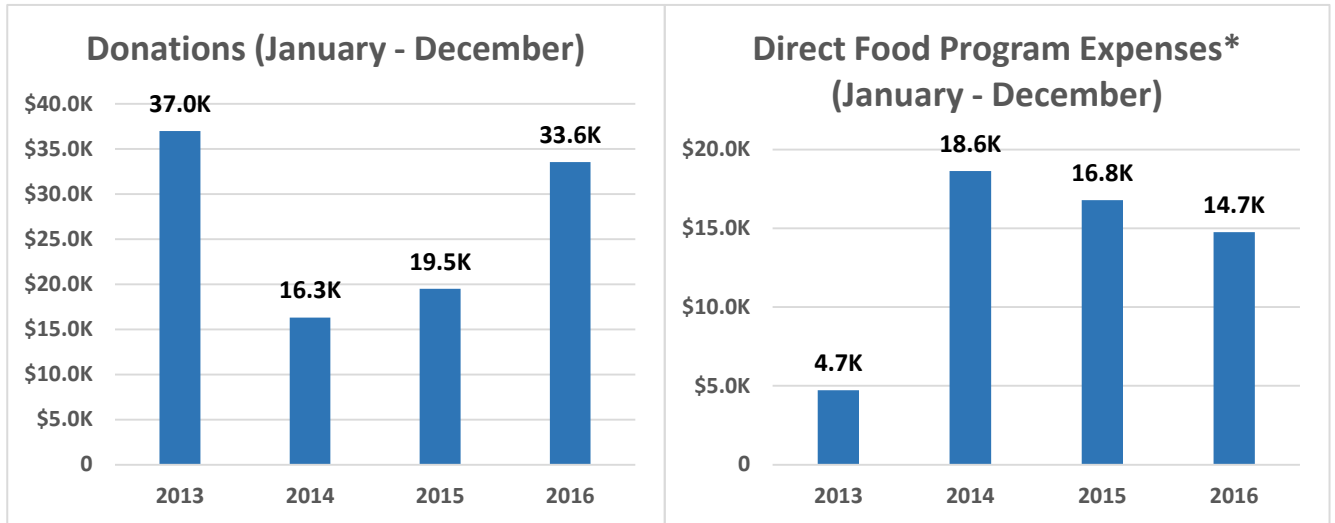
Our phone lines are open 24 hours a day for emergency food requests and to provide referrals to other agencies for assistance.

(440) 473-3885

Thanks to Local Donors and Businesses for Their Loyal Support:

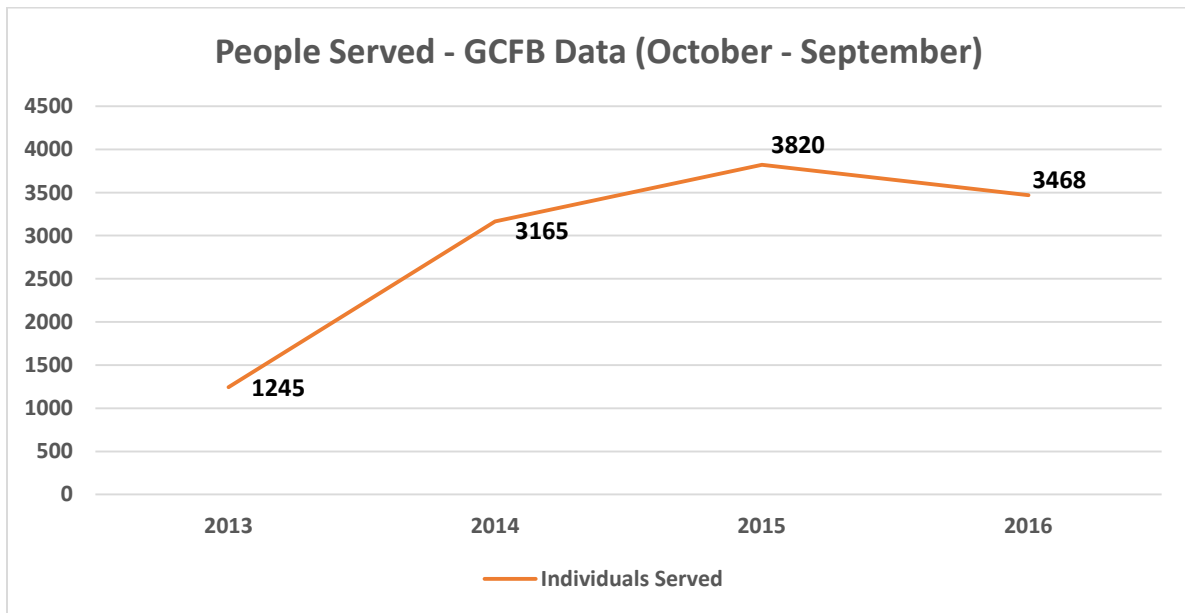
- **Food:**
 - [Orlando Bakery](#) is our major provider of bread for our monthly distribution.
 - A truck from nearby [All Faiths Pantry](#) delivers hundreds of pounds of fresh produce as available, as a supplement to produce ordered from the Food Bank.
 - [Honey Baked Ham](#) has faithfully contributed ham bones and pieces for many years.
- **Communications:**
 - [Saturn Press](#) prints and mails our quarterly newsletter.
 - [Website Solutions USA](#) hosts our website.

2016 Financial Report:



*The higher expenses beginning in 2014 reflect warehouse acquisition and management. Figures for 2013-2015 updated from the previous report reflect added categories of operating expenses related to our outreach program.

2016 Client Report:



On December 10, 2016, St. Mary of Egypt gave a presentation to the **Eastern Orthodox Women's Guild** of Greater Cleveland, highlighting the Mission's charitable work and Food Bank partnership.

St. Mary of Egypt Executive Board

Officers:

Tara Reidy, President

Ann Papadelis, V.P. & Treasurer

Presvytera Daisy Dimon, Secretary

Trustees:

Ken Boukis, Esq., Legal Counsel

Mary Pagonakis

St. Mary of Egypt Advisory Board

Bill Bewley

Nicholas Bodle

Vaso Boukis

Liberty Darakos

Emmanuel Ermidis

Cheryl Krawetz

Joanna Kritikos

Tessie Lekas

Kathy Markos

Jane Murray

Virginia Salamalekis

Irene Scordos

John Scordos

Spiritual Oversight and Direction

His Eminence Metropolitan Savas of Pittsburgh

Rev. Fr. Dean Dimon, Annunciation Church – Cleveland

Thanks to Consultants:

- **John Gary Boukis** of **Superior Construction** for ongoing warehouse repair and upgrade
- **Charles Papadelis** for mailing donation receipts
- Special thanks to **Cynthia Kula** and **Nick Jurkiw** of **Walthall CPAs** for their support with bookkeeping and tax services.

St. Mary of Egypt is a member of:



Designated Donor #4697 Secure Online Donation